

Chesapeake Basin

Map 2.8-1 Growth Patterns

June 1, 2000

Current and Planned Growth Patterns

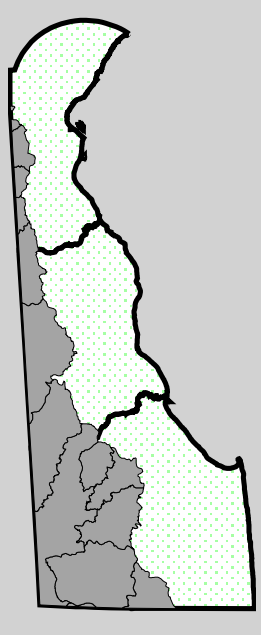
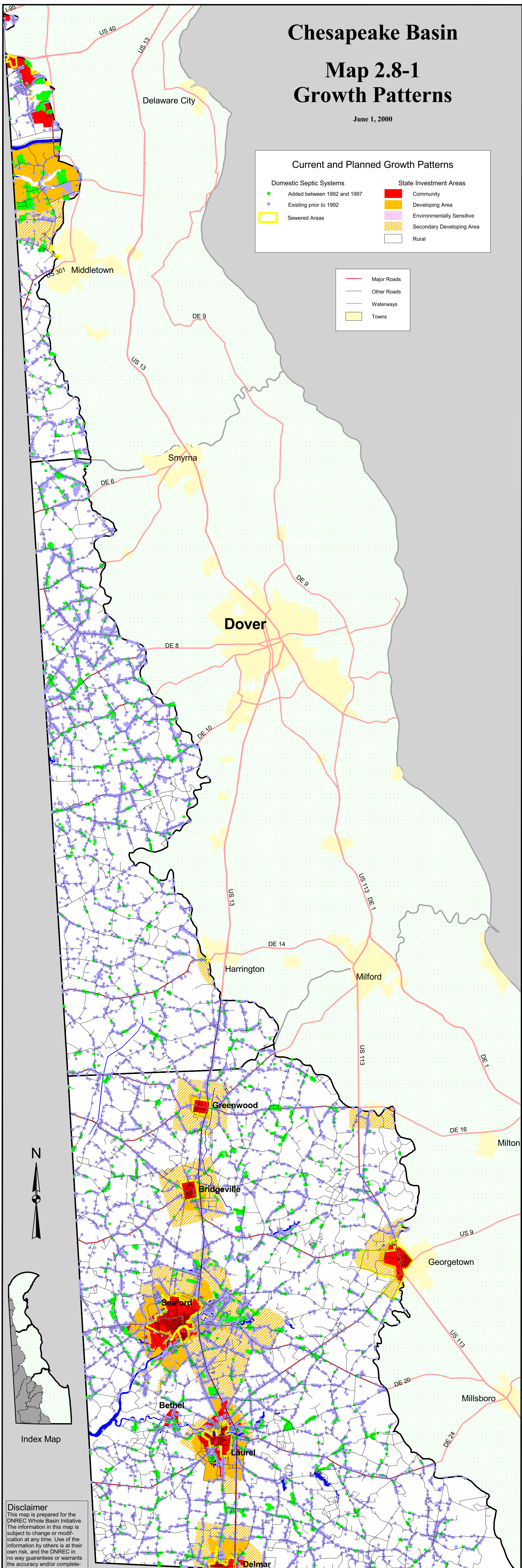
Domestic Septic Systems

- Added between 1992 and 1997
- Existing prior to 1992
- Sewered Areas

State Investment Areas

- Community
- Developing Area
- Environmentally Sensitive
- Secondary Developing Area
- Rural

- Major Roads
- Other Roads
- Waterways
- Towns



Index Map

Disclaimer
This map is prepared for the DNREC Whole Basin Initiative. The information in this map is subject to change or modification at any time. Use of the information by others is at their own risk, and the DNREC in no way guarantees or warrants the accuracy and/or completeness of the information. The information depicted is provided for general and approximate graphical representation only.

6 0 6 Miles

Growth Patterns