

Chesapeake Basin

Map 2.5-4 Dissolved Oxygen Concentrations and Trends

June 1, 2000

Dissolved Oxygen

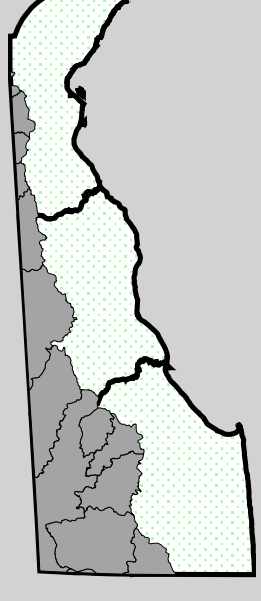
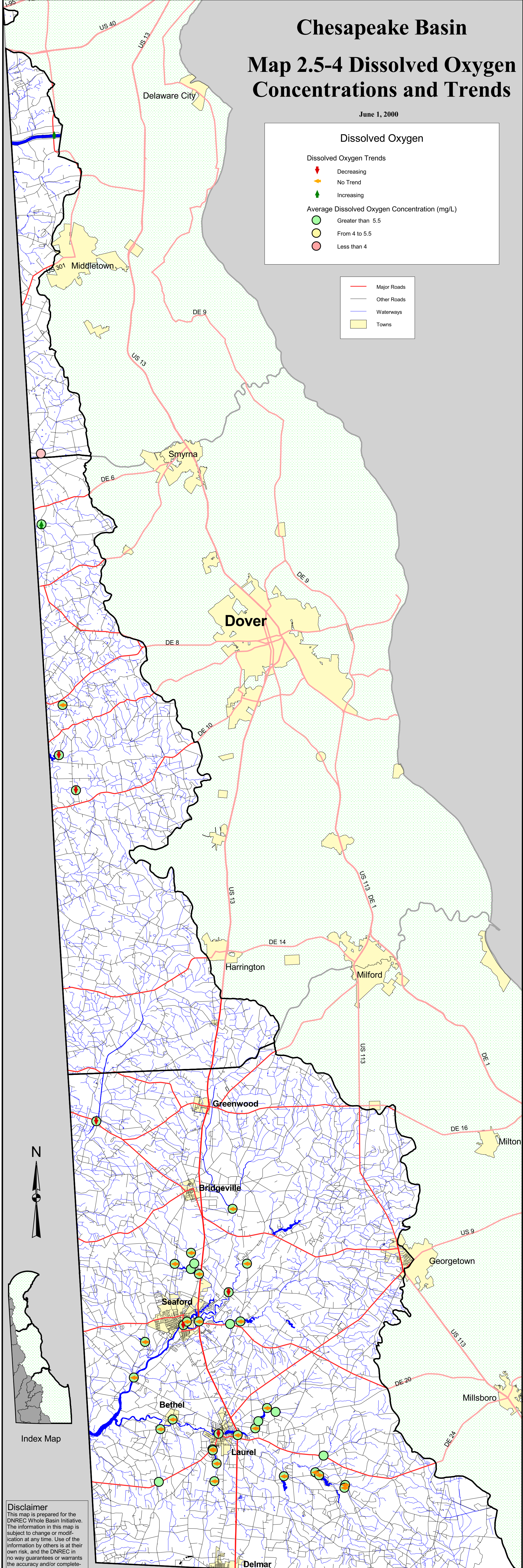
Dissolved Oxygen Trends

- ▼ Decreasing
- ▶ No Trend
- ▲ Increasing

Average Dissolved Oxygen Concentration (mg/L)

- Greater than 5.5
- From 4 to 5.5
- Less than 4

- Major Roads
- Other Roads
- Waterways
- Towns



Index Map

Disclaimer
 This map is prepared for the DNREC Whole Basin Initiative. The information in this map is subject to change or modification at any time. Use of the information by others is at their own risk, and the DNREC in no way guarantees or warrants the accuracy and/or completeness of the information. The information depicted is provided for general and approximate graphical representation only.

6 0 6 Miles

Dissolved Oxygen