

# Chesapeake Basin

## Map 2.3-1

### Known and Potential Nutrient Sources

June 1, 2000

**Known and Potential Nutrient Sources**

<ul style="list-style-type: none"> <li>Animal Operations</li> <li>Combined Sewer Overflow</li> <li>Dredge Spoil Disposal Areas</li> <li>Hazardous Waste Generators</li> <li>Landfills &amp; Dumps</li> <li>Large On-site Septic</li> <li>NPDES Outfalls</li> <li>Pesticide Loading, Mixing &amp; Storage</li> </ul>	<ul style="list-style-type: none"> <li>SIRB Sites</li> <li>Salvage Yards</li> <li>Sludge Application Sites</li> <li>Spray Irrigation Sites</li> <li>Tire Piles</li> <li>Toxics Release Inventory Sites</li> <li>Underground Storage Tanks</li> <li>Domestic Septic Systems</li> </ul>
---	---

**Contaminant Potential**

○ Not Rated	○ Medium
○ Low	○ High

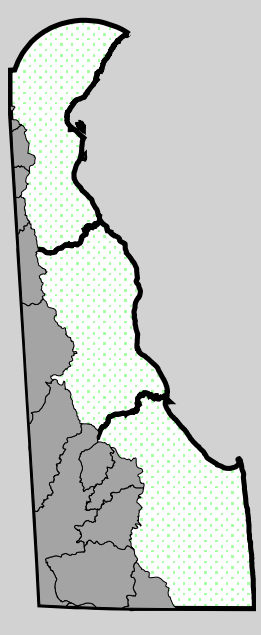
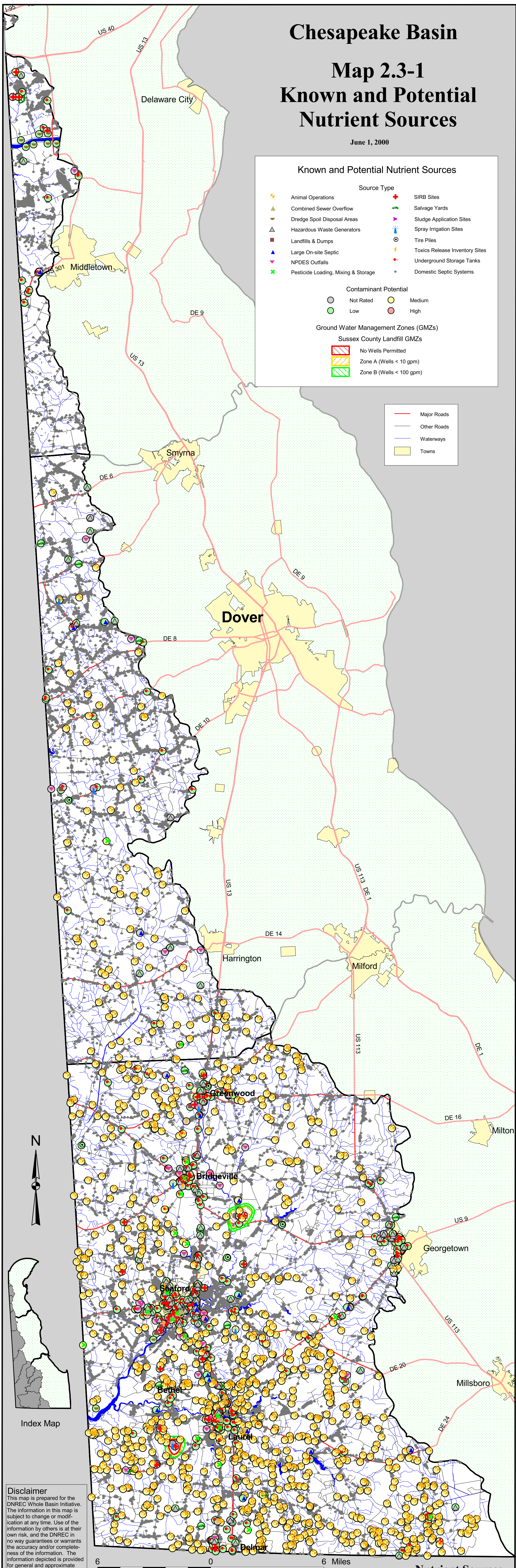
  

**Ground Water Management Zones (GMZs)**

**Sussex County Landfill GMZs**

	No Wells Permitted
	Zone A (Wells < 10 gpm)
	Zone B (Wells < 100 gpm)

	Major Roads
	Other Roads
	Waterways
	Towns



**Disclaimer**  
 This map is prepared for the DNREC Whole Basin Initiative. The information in this map is subject to change or modification at any time. Use of the information by others is at their own risk, and the DNREC in no way guarantees or warrants the accuracy and/or completeness of the information. The information depicted is provided for general and approximate graphical representation only.

6 0 6 Miles

**Nutrient Sources**